

MBP1800

MOTORTECH Bridge Spark Plug



■ Spark Plugs & Accessories

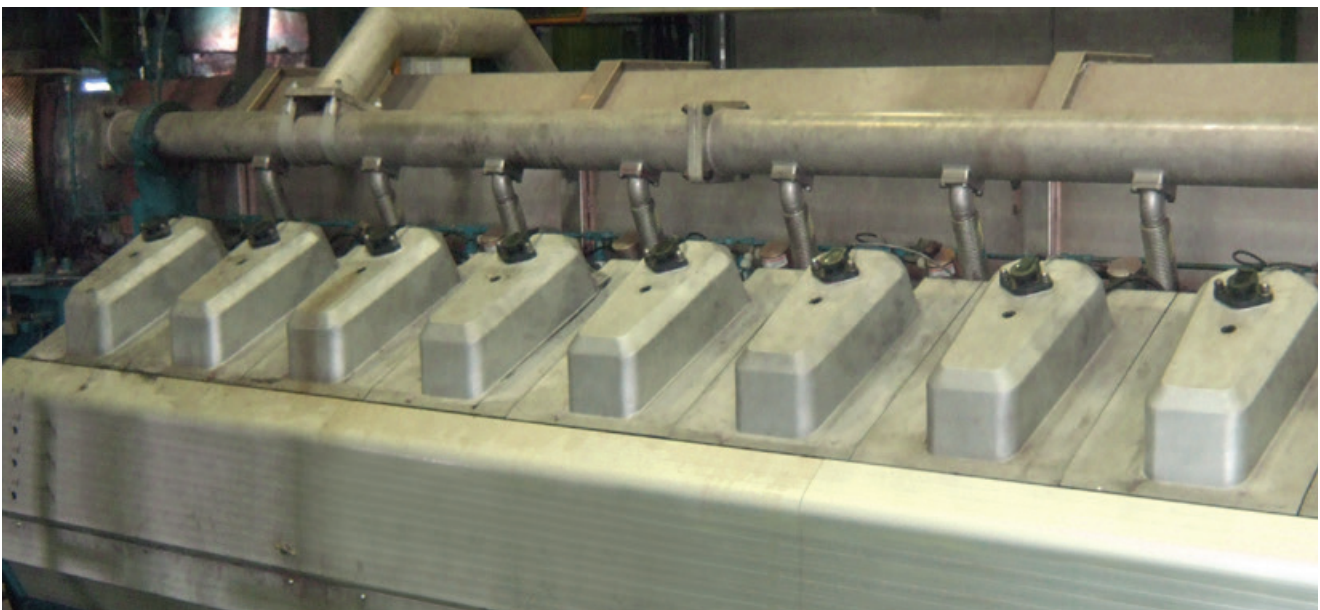
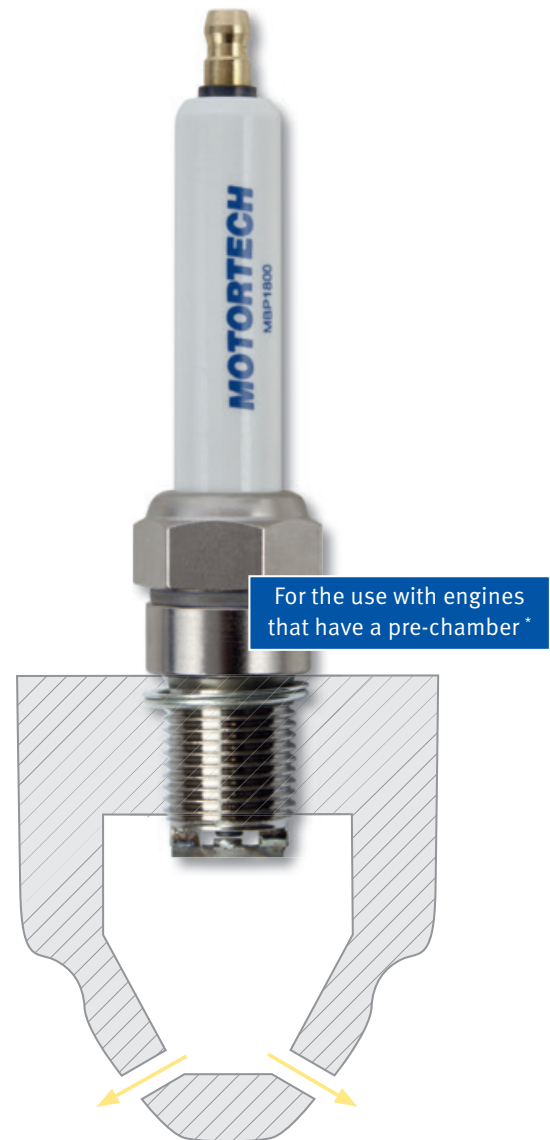
Modern gas engines are permanently operating under absolute extreme conditions with an effective mean pressure of more than 20 bar, with highly corrosive fuels (H₂S) and lean mixtures – simultaneously demanding longer life periods.

The Key to Durability, Performance and Quality

The MOTORTECH MBP1800 spark plug uses an innovative, highly solid electrode design, thus granting three times longer lifetimes than any traditional J-gap spark plug can do.

General Features

- Long life
- New bridge electrode design
- Large spark surface area (11mm²/ 0.017 sq in.)
- Double iridium electrodes
- Advanced welding process
- M18 thread



Double Iridium Electrodes

The MBP1800's special double iridium electrode structure lead to a large spark surface area of 11 mm²/ 0.017 sq in.

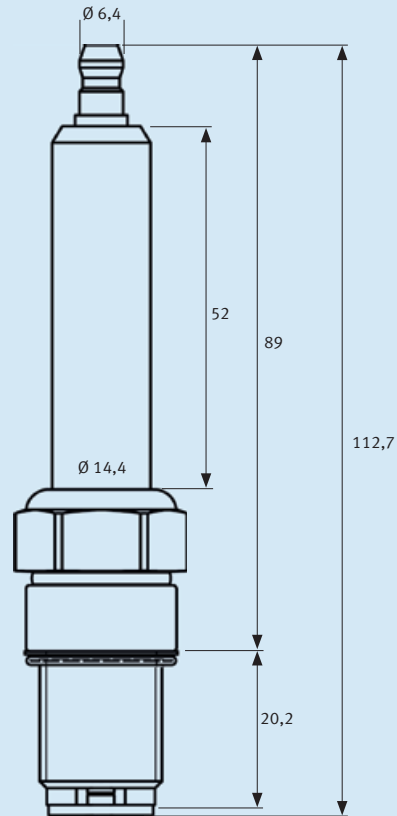
Innovative Electrode Design

The bridge design offers two heat paths, maximizing the heat dissipation of the ground electrode, reducing the electrode wear out, thus extending the spark plug life period.

Patented Welding Process

The electron beam welding is the most robust of all currently known welding processes. The vacuum environment and the precise electron beam provide for the best possible bi-metal connection.

MBP1800



Thread Size:	M18x1.5
Thread Reach:	20.2 mm
Alloy Center/ Ground Electrode:	Iridium / Iridium (Ir/Ir)
HEX:	22.2 mm / 7/8 in.
Spark Plug Socket:	07.99.022-3-L
Tightening Torque:	50 to 60 Nm / 37 to 44 lb-ft
Equivalent to:	FEDERAL MOGUL® FB78WW, ROLLS ROYCE® 710875, WÄRSTILÄ® PAAF092377

* Call MOTORTECH or your nearest MOTORTECH sales partner for information about the range of application.

MOTORTECH GmbH

Hogrevestr. 21–23
29223 Celle
Germany

Phone: +49 (5141) 93 99 0
Fax: +49 (5141) 93 99 99
E-Mail: sales@motortech.de
Web: www.motortech.de

MOTORTECH Americas, LLC

1400 Dealers Avenue, Suite A
New Orleans, LA 70123
USA

Phone: +1 (504) 355 4212
Fax: +1 (504) 355 4217
E-Mail: info@motortechamericas.com
Web: www.motortechamericas.com

MOTORTECH Shanghai Co. Ltd.

Room 1018 Enterprise Square,
No. 228 Meiyuan Road,
Jing'An District, 200070 Shanghai
China

Phone: +86 (21) 6380 7338
E-Mail: info@motortechshanghai.com
Web: www.motortechshanghai.com

GAS ENGINE TECHNOLOGY

Ignition Systems	Red
Spark Plugs & Accessories	Orange
Gas Engine Control Systems	Light Blue
Sensor Systems	Yellow
Air/Fuel Ratio Control Systems	Green
Exhaust Gas Aftertreatment	Green
Gas Engine Accessories	Grey

P/N 01.25.005-DE | Rev.03/2020 | MOTORTECH SalesFlyer MBP1800 Bridge-Zündkerze

© Copyright 2020 MOTORTECH GmbH. All rights reserved.

MOTORTECH products and the MOTORTECH logo are registered and/or common law trademarks of MOTORTECH GmbH. All other trademarks and logos used or shown in the publication are the property of the respective rights holders and are used for reference purposes only.

The specifications mentioned in this document are subject to change without notice. All information and images are provided without guarantee.

Distribution: