

## Product Update

# ALL-IN-ONE

## New Firmware – Release 2.6.0



The new firmware 2.6.0 is now available for MOTORTECH generator & CHP control systems ALL-IN-ONE.NTC and ALL IN-ONE.NT.

### Download

The new firmware including a detailed new features list can be downloaded at the following address (6,8 MB):

[https://www.motortech.de/fileadmin/user\\_upload/software/IS-NT-AFR-2.6.0.zip](https://www.motortech.de/fileadmin/user_upload/software/IS-NT-AFR-2.6.0.zip)

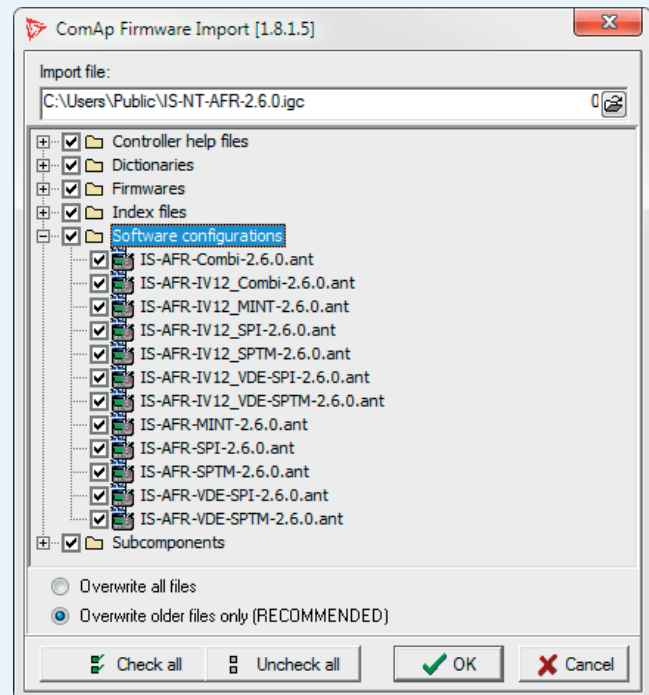
Please note that the above firmware file also includes the new MOTORTECH ECU list 1.6.0.

In order to install and use the firmware, the latest version of the ComAp PC Suite must be installed on your computer. The current ComAp PC Suite can be obtained via the web site of the manufacturer ComAp in the download center at:

<https://www.comap-control.com/support/download-center>

After downloading the new ALL-IN-ONE firmware, execute the IGC file by double-clicking it and then follow the instructions.

Further information on completing firmware updates can be found in the GenConfig 3.0 reference guide from ComAp in section *Controller Firmware Upgrade*.



### New Functions and Modifications

- New archive structure including support of ALL-IN-ONE.Vision12 color touch display
  - All 2.6.0 archives now support MIC ignition controllers.
  - IV12 archives support the remote displays ALL-IN-ONE.Vision12 and ALL-IN-ONE.Vision8.
  - All other archives support remote displays ALL-IN-ONE.Vision5 and ALL-IN-ONE.Vision8.
- New parameter conditions concerning power derating and minimum power in parallel to mains
  - The lowest configurable value of the parameters *Derating1 pwr* and *Derating2 pwr* is now limited by the set *Min power PtM* value.
  - The highest configurable value of *Min power PtM* is now limited by the set *Derating1 pwr* value.
  - If *Derating2 pwr* is set lower than *Min power PtM*, the slow stop alarm *DeratePwrErr* will be issued.

#### DISTRIBUTION

|                                    |     |
|------------------------------------|-----|
| Customers / others                 | Yes |
| Representatives and Sales Partners | Yes |
| OEM partners                       | Yes |
| MOTORTECH subsidiaries             | Yes |

## Product Update



### Configuration example

*ProcessControl:*    *Derating1 pwr*    50 %  
                               *Derating2 pwr*    40 %  
  
*Gener protect:*    *Min power PtM*    5 %

In this example, setting *Min power PtM* above 50 % is not possible, because it cannot be set higher than *Derating1 pwr*. *Min power PtM* can be set to values above 40 %, but then the slow stop alarm *DeratePwrErr* will be issued.

- Gas ventilation test modified
  - The LBI *GasVTest OK* must be active now for at least 3 s when the LBO *GasVTest run* is activated and the *GasVTest del* timer is counting. Otherwise the gas ventilation test will not be passed.
- Communication loss detection for MIC ignition controller, VariStep stepper motor driver and MAN® data logger added
  - Communication loss detection can be activated for each device by the respective parameter in the *Engine protect* group (see table below).
  - For each device, a corresponding logical binary output (LBO) was added (see table below).
  - For each device, the constant reception of a specific CAN frame is checked. If the respective frame is not received within 2 seconds, the corresponding logical binary output is set to 1 and a respective warning is issued and protocolled in the history.

| Feature                        | MIC ignition controller           | VariStep stepper motor driver                  | MAN® data logger  |
|--------------------------------|-----------------------------------|--|---|
| Setpoint <i>Engine protect</i> | <i>MICComLost</i>                 | <i>VariStpComLost</i>                          | <i>LoggerComLost</i>  |
| Logical binary output          | <i>MICComLost</i>                 | <i>VariStpComLost</i>                          | <i>LoggerComLost</i>  |
| Supported CAN modes            | <i>J1939</i> at source address 52 | <i>ALL-IN-ONE (J1939)</i> at source address 90 | <i>J1939</i> ; source addresses pre-programmed from factory |

- Please note that the VariStep at source address 91 is not evaluated by the *VariStpComLost* function.
- In order to slowly stop or shut down the engine when a communication loss is detected by the activated function, add a VPIO module to your module configuration. Then assign the respective logical binary output from the *Log Bout* group as source to one of the binary outputs of the VPIO module. For the corresponding binary input of the same VPIO module, set the desired protection (*Slow stop* or *Shutdown*). For the MAN® data logger, we recommend to always set *Shutdown* as protection.

### DISTRIBUTION

|                                    |     |
|------------------------------------|-----|
| Customers / others                 | Yes |
| Representatives and Sales Partners | Yes |
| OEM partners                       | Yes |
| MOTORTECH subsidiaries             | Yes |



## ■ Product Update

### Bugfixes

- **Functionality of *T BY PWR* fixed**
  - In the *ProcessControl* group, the *Load ctrl PtM* function mode *T BY PWR* (temperature by power) did not work properly when the parameter *Overheat prot* was set to *DISABLED*.
  - The following VDE functions were not evaluated while *T BY PWR* was active: *LBI Load reduction*, *LAI Load reduction*, *PWROVRF* (power over frequency)
- ***MainsProtState* pulse filtering fixed**
  - During the release of LBO *MainsProtState*, unwanted pulses were accidentally generated.
- **When power supply was switched off and on, the controller changed the setting of parameter *RS485(1)conv.* in the *Comms settings* group from *ENABLED* to *DISABLED* on its own.**
- **An error concerning the indication of the alarms *G ph+L neg* and *G ph opposed* was fixed.**
- **An error was fixed which caused the activation of the LBO *MainsProtState* to be delayed in some cases for more than 100 ms.**

### DISTRIBUTION

|                                    |     |
|------------------------------------|-----|
| Customers / others                 | Yes |
| Representatives and Sales Partners | Yes |
| OEM partners                       | Yes |
| MOTORTECH subsidiaries             | Yes |