

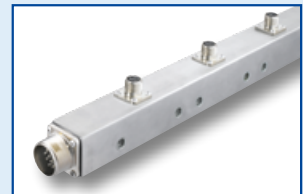
## Wiring Rail Kit for 12 Cylinder WAUKESHA® VHP ESM Series Engines

Updated kit assembly to rewire the  
existing Ignition Control Wiring

For years MOTORTECH successfully offers a Wiring Rail Kit to replace the original set supplied by the engine manufacturer. To the current product we have replaced the inflexible shielded primary leads by the New Style MOTORTECH primary leads.

- Direct replacement for WAUKESHA® primary ignition harness (P/N 740283)
- Prefabricated components guarantee easy installation
- Top quality materials and design last longer
- Wiring rails made from stainless steel for harsh environment
- Special foam filled to ensure that all wires are separated from ground and will not vibrate and eventually short-out to ground
- No bolts and nuts that come loose from vibration
- Connecting harness assembly links wiring rails, ESM controller and other accessories
- New Style MOTORTECH primary leads in a reliable design with 90° MIL ignition coil connections
- Replaceable harness and primary leads makes complete change of wiring system needles

**AlphaRail**   
IGNITION RAIL SYSTEM



Separate connecting harness to  
ESM controller



Shielded primary leads for con-  
nection of rail and ignition coils

## Ordering Information

P/N	Description	WAUKESHA® Engine Model	Equivalent to
95.75.048-B	AlphaRail wiring rail kit, ignition	VHP 12 Cylinder	740283

## Ordering Information – Sub-Components

Contained Parts		P/N 95.75.048-B
P/N	Description	
95.86.614-NAN	AlphaRail wiring rail, ignition, 6 cylinders	2
95.49.035	Connecting harness assembly, ESM to wiring rails	1
95.01.141-24	New Style shielded primary lead for AlphaRail	12
75.10.303	Mounting bracket, 40x40 mm, standard	4
75.10.120	Flat bar, 150°	4

Distributed by:

### Copyright

Copyright is reserved for all materials used in MOTORTECH publications. Any reproduction or use of objects, such as images or text modules, in other electronic or printed publications is only permitted with the permission of MOTORTECH.

### Trademark notice

All OEM names and part numbers are only indicated for reference purposes. All rights to trademarks, logos and symbols used or illustrated in MOTORTECH publications remain reserved for the respective owner and are only used for reference purposes.