



MOTORTECH Actuator Replacement Kit for WAUKESHA® VHP Series Four® with ESM and Extender® Series Engines

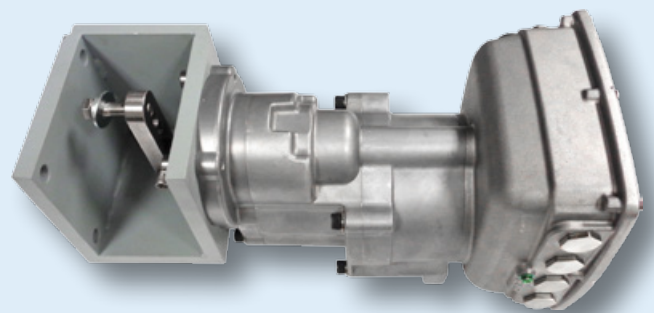
Features:

- Drop in replacement
- Eliminates HEINZMANN® actuator
- Works on WAUKESHA® VHP L5774LT, L5794GSI/LT and L7044GSI

Ordering Information

P/N	Description	Replaces
63.04.176	Actuator replacement kit	WED 214046

MOT-Actuator
MOTORTECH ELECTRIC ESM EXT ACTUATOR





- Plug and play connection
- Does **not** require any
 - ESM software adjustment
 - or harness modification



- Including mounting bracket for flange and bottom mount
- Allows easy drop in installation



- Including lever
- Simple connection to existing linkage

INSTALLATION NOTICE: If used on 6 cylinder WAUKESHA® VHP engines the IMPCO throttle needs to be readjusted by flipping it over 180 degrees.

Distributed by:

Copyright

Copyright is reserved for all materials used in MOTORTECH publications. Any reproduction or use of objects, such as images or text modules, in other electronic or printed publications is only permitted with the permission of MOTORTECH.

Trademark Information

MOTORTECH products and the MOTORTECH logo are registered and/or common law trademarks of MOTORTECH Holding GmbH.

All OEM names and part numbers shown are for reference purposes only. All trademarks, logos and symbols used or shown in this MOTORTECH publication are exclusive objects to the right of their owners and are used for reference purposes only.