

## Air/Fuel Ratio Control Systems

# VariFuel2

MOTORTECH AIR/GAS MIXER

## VariFuel2-TEM

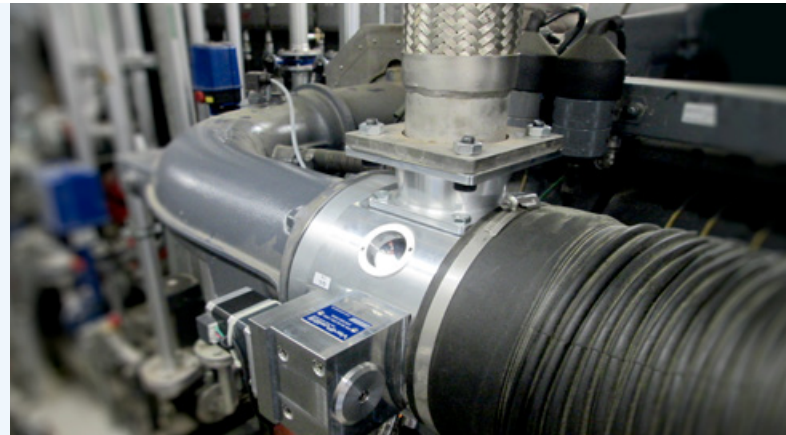
### Air/Gas Mixer for MWM® Gas Engines TCG 2016 V08 C and V12 C

The VariFuel2-TEM air/gas mixer by MOTORTECH was developed to replace the gas mixers used on MWM® TCG gas engines, and easily fits the existing configuration of the engine without mechanical reconfiguration.



### General Features

- Easy replacement of original gas mixer without mechanical reconfiguration
- Plug and play — Connects to existing TEM modules for direct control
- Improved start behavior and optimized performance during operation with special gases
- Low-maintenance components make the constant use of expensive repair sets unnecessary
- Improved regulatory behavior through regulation via the variable fuel ring



### Ordering information

P/N	Description
30.45.200-120DG-XA	VariFuel2-TEM air/gas mixer for MWM® TCG 2016 V08 C and V12 C
31.01.720-85.0-3	Flow body for use on MWM® TCG 2016 V08 C – Biogas
31.01.720-70.0-3	Flow body for use on MWM® TCG 2016 V08 C – Natural gas
31.01.720-60.0-3	Flow body for use on MWM® TCG 2016 V12 C – Biogas
31.01.720-30.0-3	Flow body for use on MWM® TCG 2016 V12 C – Natural gas

For further information, please contact your MOTORTECH representative: [direkt@motortech.de](mailto:direkt@motortech.de)