

Sales & Service Bulletin

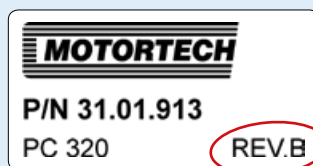
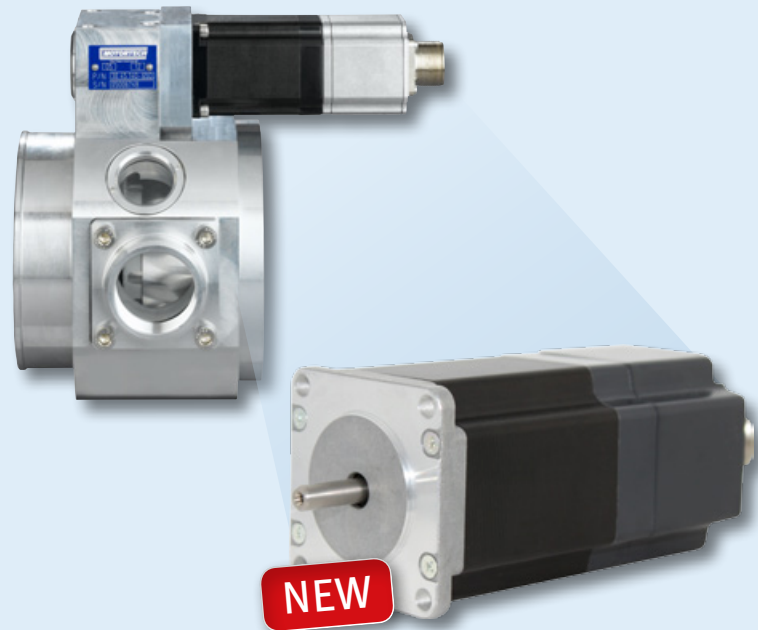
New Product	Product Update	Product Information
Technical Information	Price Update	Marketing Information
No. 2013/02	Date May 28, 2013	Page 1/2

VariFuel2 
MOTORTECH AIR/FUEL RATIO MIXER

MOTORTECH VariFuel2 Air/Fuel Ratio Mixer – New Stepper Motor

Please, note that new VariFuel2 mixers are equipped with a new stepper motor. The mixers with the following serial numbers are the first models featuring this stepper motor:

P/N 30.45.100-50D series 100-50: S/N 05008955
 P/N 30.45.140-65D series 140-65: S/N 05008819
 P/N 30.45.200-100D series 200-100: S/N 05008975
 P/N 30.45.200-120D series 200-120: S/N 05009112



How to Recognize the New Stepper Motor?

VariFuel2 mixers with the new stepper motor can be recognized by the serial number, its single-colored design (see picture above) and the label referring to REV. B.

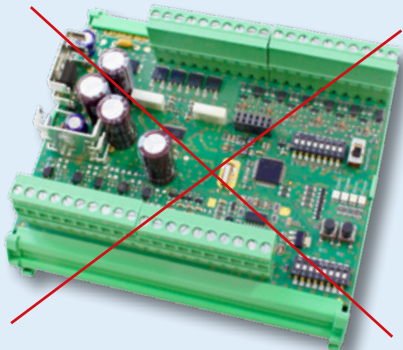
Sales & Service Bulletin

New Product	Product Update	Product Information
Technical Information	Price Update	Marketing Information
No. 2013/02	Date May 28, 2013	Page 2/2

Using the SMC1 Stepper Motor Card

VariFuel2 mixers with REV. B stepper motors cannot be controlled by the SMC1 stepper motor card (P/N

31.01.950-100/-140/-200). They can only be controlled by a VariStep card.



SMC1 stepper motor card



VariStep stepper motor card

Using the VariStep Stepper Motor Card

When programming the VariStep with the MICT (MOTORTECH Integrated Configuration Tool), select the corresponding VariFuel series with Rev. B. If this entry is not available, an online update of the MICT is required.

