

New Product	Product Update	Product Information
Technical Information	Price Update	Marketing Information
No. 2016/20	Date July 13, 2016	Page 1/2

MIC3+ Ignition Controller

MIC3+
MOTORTECH IGNITION CONTROLLER

MOTORTECH proudly presents the new MIC3+ ignition controller. The MIC3+ provides enhanced performance based on the successful MIC3 series.

The performance improvement provides up to 300 mJ primary energy giving reliable combustion with weak or fluctuating caloric gas. The patented variable ignition energy (MOST*), accurate spark timing and diversified online diagnostics help to improve engine efficiency, spark plug life and availability of the equipment under the strictest emission regulations.

For use on engines up to 12 cylinders, the new MIC3+ series will replace the current MIC3 series in the mid-term.



Features

- Higher performance at the same conditions – Sales prices identical to MIC3 series
- Full compatibility to MIC3 series
- Easy implementation into existing plant constructions as well as a replacement or performance upgrade of existing plants in the field
- Same range of functions as MIC3 series
- Use of same accessory components such as harnesses, ignition coils, etc.

MOST*
MOTORTECH OUTPUT STAGE TECHNOLOGY

MOST* works with the following principles:

- adjustable ignition spark duration with different available ignition voltages
- constant spark intensity via adjusted ignition spark duration

*Patent No.: US 8,893,692 B5

Technical Data Comparison

Feature	MIC3	MIC3+
Primary Energy	200 mJ	300 mJ
Start-up Boost	300 mJ	500 mJ
Primary Voltage	250 VDC	250 VDC
Supply Voltage	10 to 32 VDC	10 to 32 VDC
Required Current	5.0 A max.	7.0 A max.
Ignition Outputs	6/12	6/12
Pickups	1 or 2	1 or 2
Interfaces	CAN-Bus, RS485, USB 2.0	CAN-Bus, RS485, USB 2.0
Configuration	MICT	MICT
Certifications	CSA, CE	CSA, CE
Dimensions (LxWxH)	250 x 240 x 89,5 mm (9.84 x 9.45 x 3.52 in.)	250 x 240 x 89,5 mm (9.84 x 9.45 x 3.52 in.)

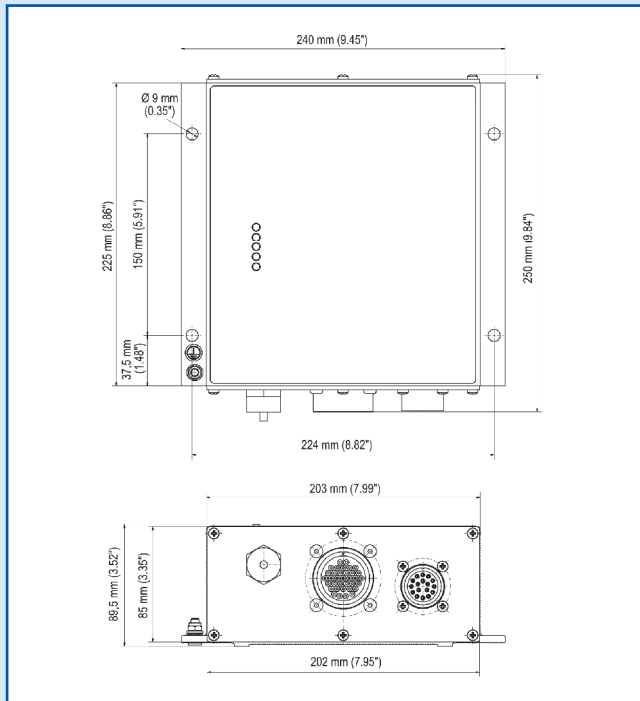
MOTORTECH GmbH
Hogrevestr. 21-23
29223 Celle, Germany
Phone: +49 5141 - 93 99 0
Fax: +49 5141 - 93 99 99
www.motortech.de
motortech@motortech.de

MOTORTECH AMERICAS, LLC
1400 Dealers Avenue, Suite A
New Orleans, LA 70123
Phone: +1 504 355 4212
Fax: +1 504 355 4217
www.motortechamericas.com
info@motortechamericas.com

DISTRIBUTION

Customers / others	Yes
Representatives and Sales Partners	Yes
OEM partners	Yes
MOTORTECH subsidiaries	Yes

New Product	Product Update	Product Information
Technical Information	Price Update	Marketing Information
No. 2016/20	Date July 13, 2016	Page 2/2



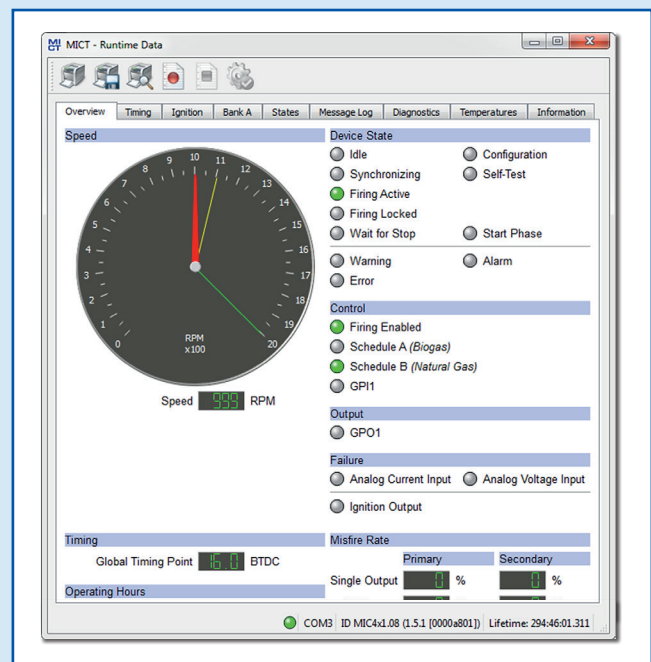
1 Identical housing dimensions and bore distances for unit mounting



3 Fieldbuses adapted to new features (e.g. information for higher energy). Downward compatibility to older generation units is guaranteed. If necessary only the device ID needs to be adjusted.



2 Same connector arrangement as MIC3 series
 a USB interface
 b Input – MIL connector, 35 pole, pin
 c Output – MIL connector, 17 pole, socket



4 For configuration the graphic user interface MICT* (MOTORTECH Integrated Configuration Tool) is used. Existing configuration files based on the MIC3 series can be used as a reference for setting up a new file for MIC3+ series. The adjustment of individual parameters for new functions or setting ranges may become necessary.

(* Rev. 2.13.00001 with start of delivery)

More information about new MIC3+ series is available at <http://www.motortech.de/download-center.html> for download.

MOTORTECH GmbH
 Hogrevestr. 21-23
 29223 Celle, Germany
 Phone: +49 5141 - 93 99 0
 Fax: +49 5141 - 93 99 99
 www.motortech.de
 motortech@motortech.de

MOTORTECH AMERICAS, LLC
 1400 Dealers Avenue, Suite A
 New Orleans, LA 70123
 Phone: +1 504 355 4212
 Fax: +1 504 355 4217
 www.motortechamericas.com
 info@motortechamericas.com

DISTRIBUTION

Customers / others	Yes
Representatives and Sales Partners	Yes
OEM partners	Yes
MOTORTECH subsidiaries	Yes