

New Product	Product Update	Product Information
Technical Information	Price Update	Marketing Information
No. 2014/24	Date Sept. 19, 2014	Page 1/5

MICT – Release 2.0

New Features for Ignition Controllers of the MIC3, MIC4 and MIC5 Series



The new 2.0 release of the MICT (MOTORTECH Integrated Configuration Tool) now comes with all ignition controllers in the MIC3, MIC4, and MIC5 series. The new version contains many new and innovative features that improve the performance of your ignition system.

To update the MICT on your PC, please read the corresponding operating manuals for the devices, available for download at www.motortech.de. Before installing the MICT, check your system requirements.

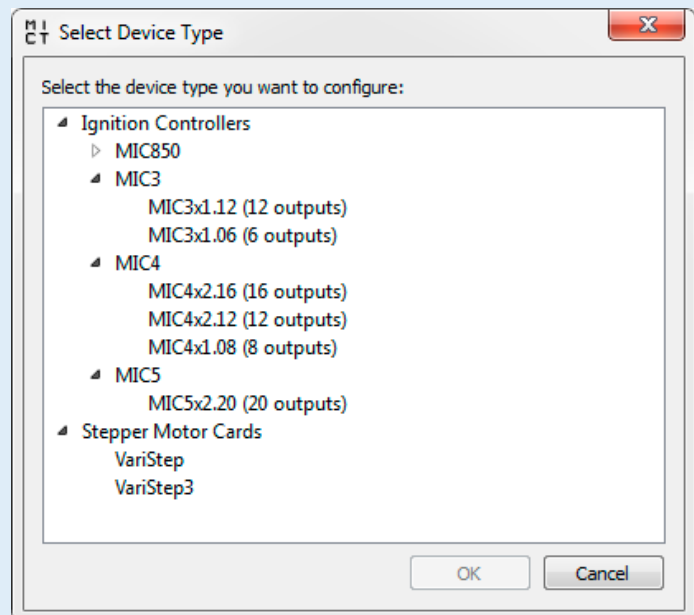
At the following link, you can download the new MICT, all currently available operating manuals, as well as the latest version of the firmware required for operating your ignition controller (111 mb).
 ► <http://www.motortech.biz/downloads/MOTORTECH-SoftwarePackage-MICT-2-0-0.zip>

Numerous Releases can be Installed Simultaneously

The improved installation process allows multiple MICT releases to be installed simultaneously.

New Selection of Device Types

The newly designed tree structure makes it easy to select device types.



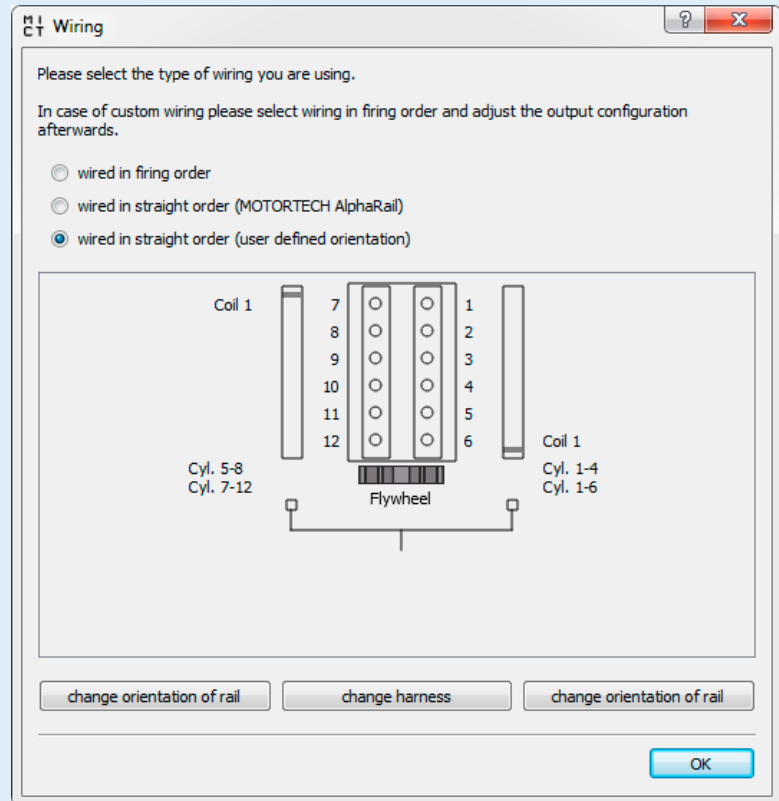
Distribution

Customers /other	Yes	OEM Partners	Yes
Distributors & Sales Partner	Yes	MOTORTECH Branches	Yes

New Product	Product Update	Product Information
Technical Information	Price Update	Marketing Information
No. 2014/24	Date Sept. 19, 2014	Page 2/5

Engine Selection and User-Defined Wiring

When choosing an engine from the engine database, users can now directly configure user-defined direct wiring. This makes it possible to define the wiring rails installed on the engine and the output harness in the ignition unit.



New Selection Option for Trigger Disks

In the pickup settings, it is now possible to select a type N trigger disk, which has its index signal mid-way between two events.

New Alarms

The following alarm messages have been added:

- Misfire rate (primary, individual output / all outputs) above threshold
- Misfires per second (primary, all outputs) above threshold
- Consecutive misfires (primary, single output) above threshold
- Misfire rate (secondary, individual output) above threshold
- Misfire rate (secondary, all outputs) above threshold
- Misfires per second (secondary, all outputs) above threshold
- Consecutive misfires (secondary, single output) above threshold
- Misfires per second (secondary, all outputs) above threshold
- Consecutive misfires (secondary, single output) above threshold

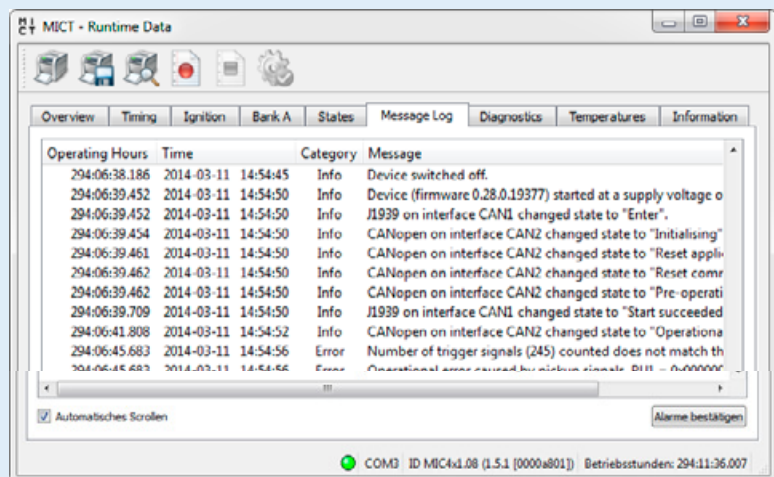
New Product	Product Update	Product Information
Technical Information	Price Update	Marketing Information
No. 2014/24	Date Sept. 19, 2014	Page 3/5

Implementation of the J1939 Fieldbus Protocol

Now, in addition to the protocols for the MOTORTECH gas engine control ALL-IN-ONE and CANopen, the J1939 fieldbus protocol is also available.

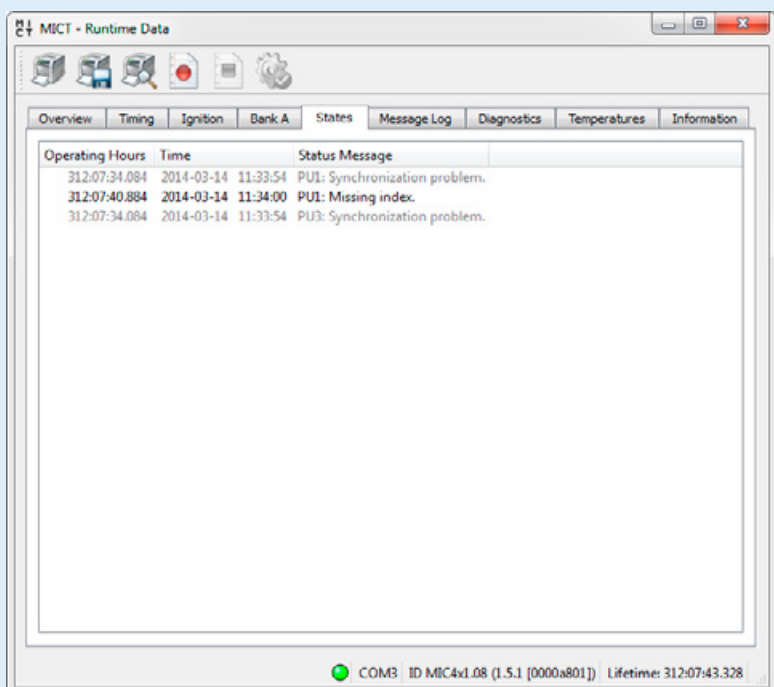
List of Warnings, Errors and Alarms merged

The "Message Log" now lists all information about warnings, errors, and alarms. In addition to the expanded alarm list and the detailed messages, the precise date and time as well as the operating hours will be shown whenever a message is added to the list.



New Runtime Data Window "States"

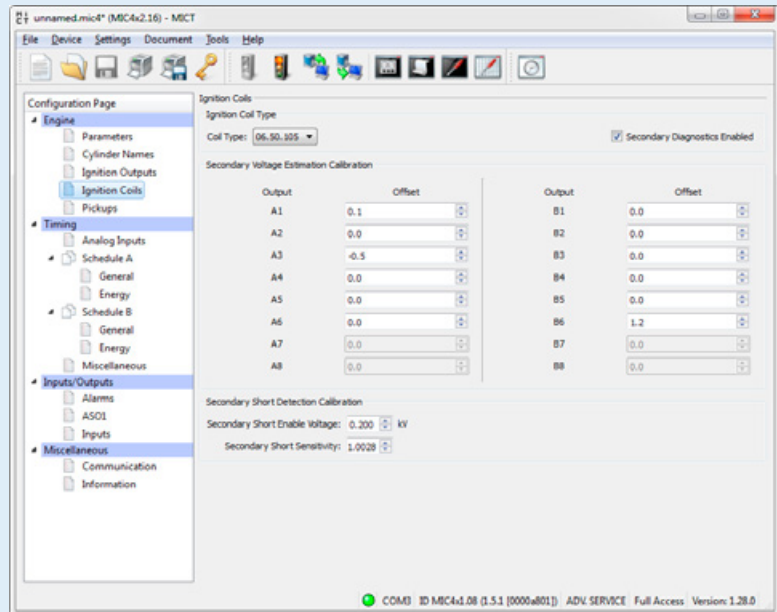
This view provides a detailed list of status messages. Every status report will include the current state of the operating hours counter as well as the date and time.



New Product	Product Update	Product Information
Technical Information	Price Update	Marketing Information
No. 2014/24	Date Sept. 19, 2014	Page 4/5

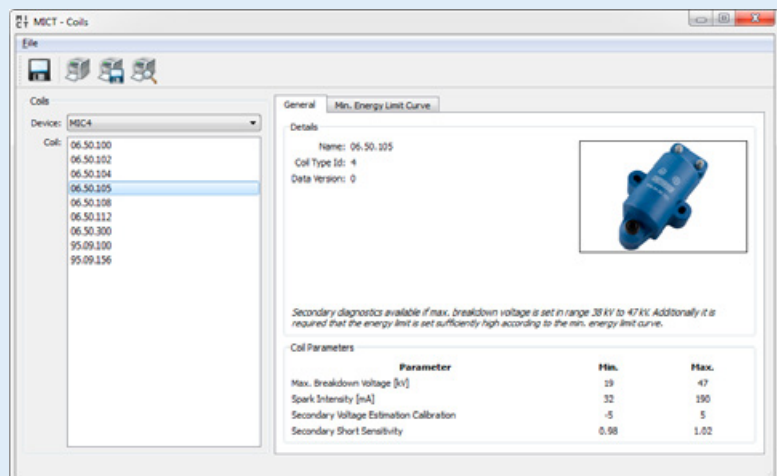
New Option for Calibrating Secondary Diagnostics

With this new feature, the secondary voltage estimation can be calibrated more precisely. After measuring the secondary voltage on every individual cylinder, for instance with an oscilloscope or SparkView high voltage indicator, the secondary voltage values can be corrected and adjusted for more precise display.



Ignition Coil Database

The MICT contains a database with technical information about MOTORTECH ignition coils. You have the option of storing and printing information on the ignition coils present in the database.



New Product

Product Update

Product Information

Technical Information

Price Update

Marketing Information

No. 2014/24

Date Sept. 19, 2014

Page 5/5

An additional graphic display shows the relationship between minimum energy limit (m) and maximum breakdown voltage for each individual ignition coil and provides support for additional settings of the ignition controller, e. g. secondary diagnostics.

