

# REPLACEMENT OF SILICONE SEALS

## ASSEMBLY INSTRUCTION



**PolyMot™**   
MOTORTECH SPARK PLUG LEADS & EXTENSIONS

### Copyright

© Copyright 2015 MOTORTECH GmbH. All rights reserved.

Distribution and reproduction of this publication or parts thereof, regardless of the specific purpose and form, are not permissible without express written approval by MOTORTECH. Information contained in this publication may be changed without prior notice.

### Trademarks

MOTORTECH products and the MOTORTECH logo are registered and/or common law trademarks of the MOTORTECH Holding GmbH. All further trademarks and logos displayed or used in this publication are the property of the respective entitled person.

# TABLE OF CONTENTS

<b>1 Introduction .....</b>	<b>4</b>
<b>2 Removal of the Old Seal .....</b>	<b>5</b>
<b>3 Assembly of New Seal .....</b>	<b>7</b>

# 1 INTRODUCTION

PolyMot high tension leads and spark plug extensions of MOTORTECH are equipped with high quality silicone seals to guarantee best possible sealing between teflon extension and ceramic insulator of the spark plug.

However, the seal ages caused by high engine temperature and operation with abrasive gas. In order to guarantee optimum sealing, protection against crossarching and continuous performance we recommend

- to examine the condition of the seal regularly, for example when spark plugs are examined or replaced,
- the immediate replacement of discolored seals,
- to replace the seals at least after 3,000 operating hours. Dependent on the appliance, seals may have to be replaced in shorter intervals.

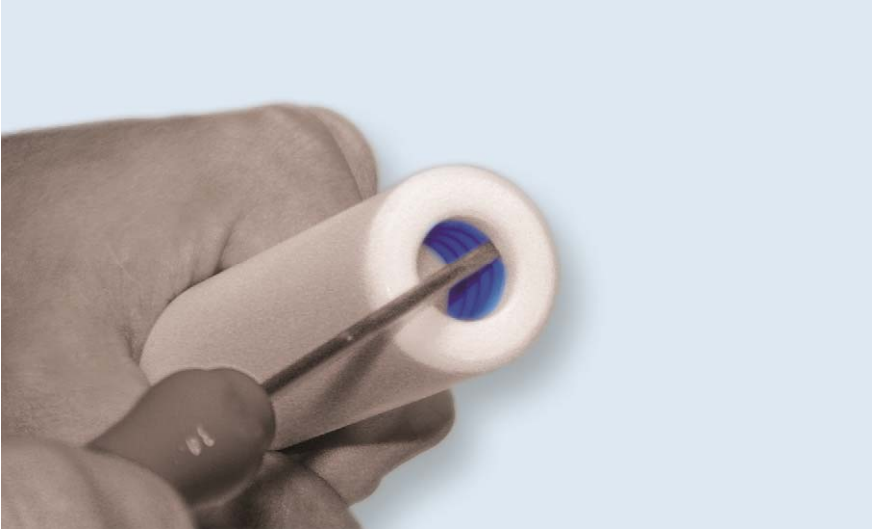
The following illustration shows aged silicone seals. The formerly blue rings are now white and blown. Whenever seals show such condition, they should definitely be replaced.



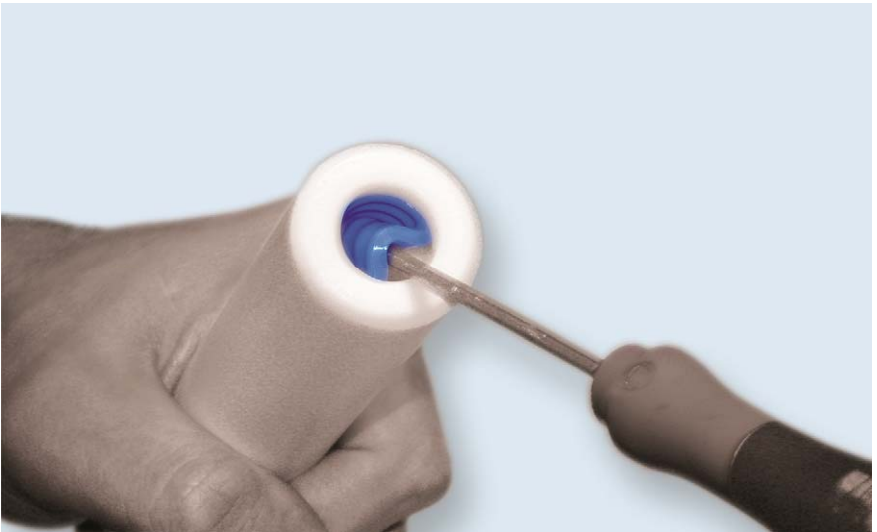
## 2 REMOVAL OF THE OLD SEAL

For removal of the old seal, please follow these steps:

1. Insert the screw driver between teflon extension and silicone seal.



2. Lever off the ring with the screw driver.



## 2 REMOVAL OF THE OLD SEAL

3. Completely push the screw driver under the seal and withdraw it.



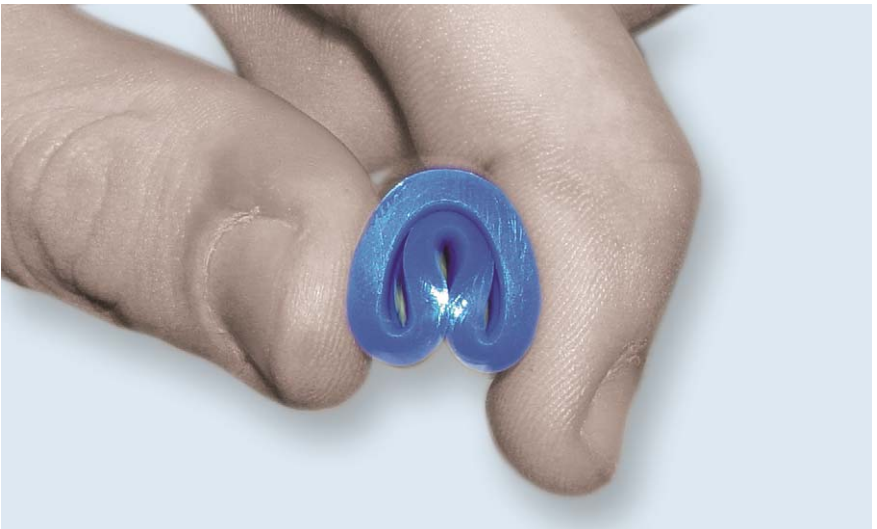
### 3 ASSEMBLY OF NEW SEAL

For assembly of the new silicone seal, please follow these steps:

1. First of all read the part number of the old silicone seal which is printed on the bottom of the ring. You will find an overview of available silicone seals in the Product Guide.

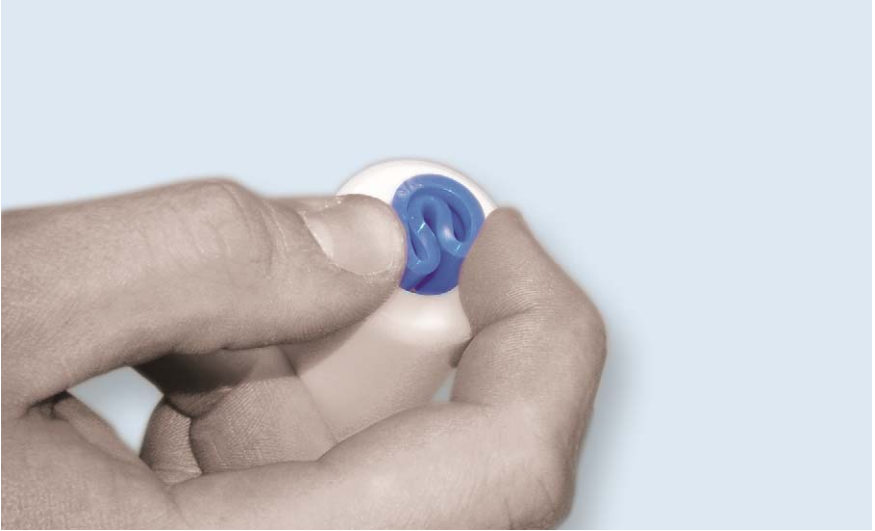


2. Fold the silicone seal as shown on the following illustration.

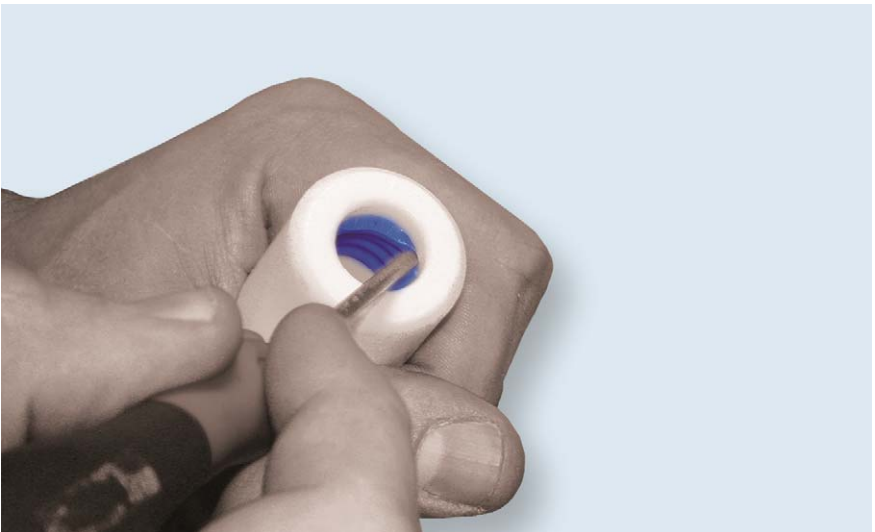


### 3 ASSEMBLY OF NEW SEAL

3. Push the silicone seal into the bore of the teflon extension with the part number facing downwards. Due to the lower temperature inside the extension there is a good chance to read the part number of the aged seal.



4. Carefully press the silicone seal into the nut using the screw driver.





5. Position the silicone seal with the screw driver accurately along the slot and check fit. The seal must flush with the bore of the teflon extension.



## Original MOTORTECH® Accessories for Stationary Gas Engines

As a supplier, MOTORTECH develops, produces and distributes accessories as well as spare and wearing parts for nearly all kinds of stationary gas engines worldwide: Ignition control and monitoring, industrial spark plugs and high tension leads, wiring systems and gas regulation – from detonation to speed control and complete gas engine management. On-site support and special training courses complete our service.



### **MOTORTECH GmbH**

Hogrevestr. 21-23  
29223 Celle  
Germany  
Phone: +49 5141 93 99 0  
Fax: +49 5141 93 99 99  
[www.motortech.de](http://www.motortech.de)  
[motortech@motortech.de](mailto:motortech@motortech.de)

### **MOTORTECH Americas, LLC**

1400 Dealers Avenue, Suite A  
New Orleans, LA 70123  
USA  
Phone: +1 504 355 4212  
Fax: +1 504 355 4217  
[www.motortechamericas.com](http://www.motortechamericas.com)  
[info@motortechamericas.com](mailto:info@motortechamericas.com)