

# APPLICATION NOTE

## ALL-IN-ONE.NT/.NTC: Activating Connection to MOTORTECH® Ignition Controller

This application note contains information on how to activate the communication connection between a generator & CHP control system ALL-IN-ONE.NT/.NTC and an ignition controller MIC3, MIC3+, MIC4, MIC5, and MIC850 using the configuration software GenConfig.

This application note is aimed at personnel tasked with the construction of control cabinets for gas engine gen-sets as well as the setup, operation, maintenance, and repair of gas engine gen-sets. A certain level of technical knowledge with respect to the operation of gas engine gen-sets and basic knowledge of electronic ignition systems are necessary.



### Comply with the documentation of the devices

This application note is an addition to the documentation of the ignition controller and the generator & CHP control system. Read and understand the complete documentation of both devices prior to start-up.

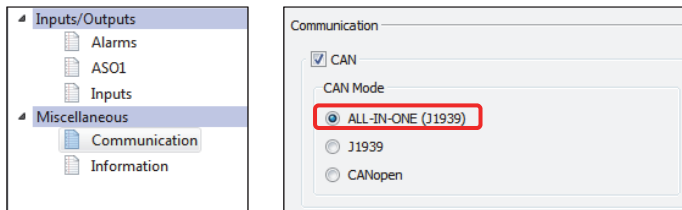
## Preparation

In order to activate the communication connection between a generator & CHP control system ALL-IN-ONE.NT/.NTC and an MIC ignition controller, first ensure the following:

1. The devices must be wired and interconnected via the CAN bus. Each bus end must be fitted with a terminating resistor of 120 Ω. Note that with the MIC3 and MIC3+, the terminating resistor is normally integrated in the input harness.

More information on CAN bus wiring can be found in section *Wiring* in the operating manual of your generator & CHP control system ALL-IN-ONE.NT/.NTC and in section *Output Wiring – CAN Bus Interface* in the operating manual of your MIC ignition controller.

2. On the MIC ignition controller, the protocol in the configuration software MICT under *Miscellaneous – Communication at CAN* must be set to *ALL-IN-ONE (J1939)* (entries vary).



More information on configuring communication via the MICT can be found in section *Miscellaneous – Communication* in the operating manual of your MIC ignition controller.

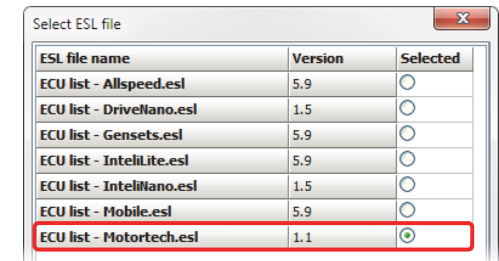
3. For communication between the ALL-IN-ONE.NT/.NTC and the MIC ignition controller, you need a password that you obtain from your MOTORTECH contact person via an email at [service@motortech.de](mailto:service@motortech.de). For this, pass on the serial number of the ALL-IN-ONE.NT/.NTC from the device plate per email.



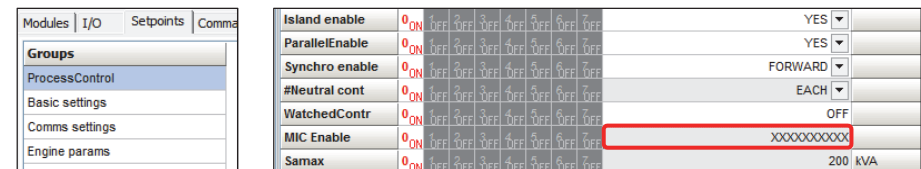
## Settings via GenConfig

Note the previous section *Preparation* first. Further ensure that the ALL-IN-ONE.NT/.NTC and the MIC ignition controller are in operation and that the configuration software GenConfig is connected to the ALL-IN-ONE.NT/.NTC. Then proceed as follows:

1. In GenConfig, first select the ECU list *ECU list - Motortech.esl* via *Options -> ESL files*.



2. Then for module configuration, select via *File -> Open* an archive with the identifier MIC that corresponds to your application (for example *IS-AFR-MIC-SPI 2.2*).
3. In the *ProcessControl* group on the *Setpoints* tab, enter under *MIC Enable* the password that you have obtained from your MOTORTECH contact person.



4. Disconnect the ALL-IN-ONE.NT/.NTC and the MIC ignition controller briefly from the power supply so that both devices restart.
  - ▶ The connection between the ALL-IN-ONE.NT/.NTC and the MIC ignition controller has been activated.